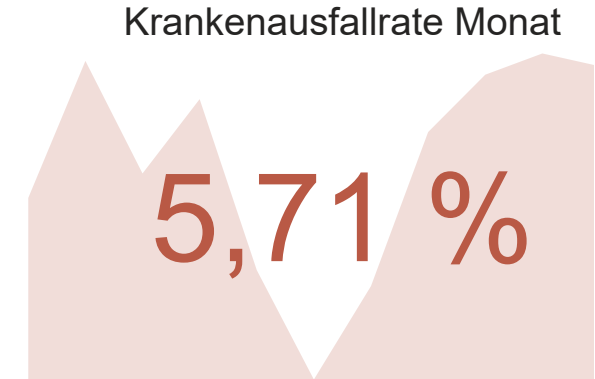
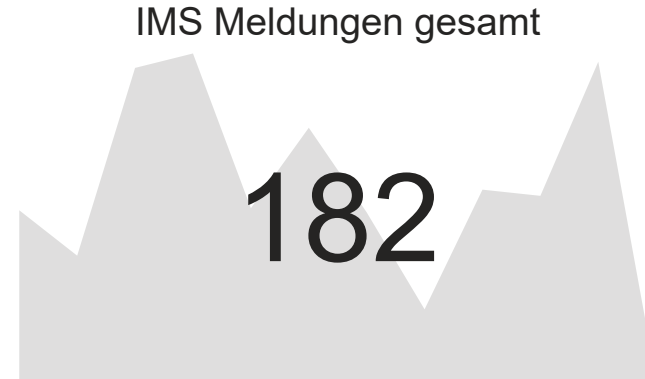
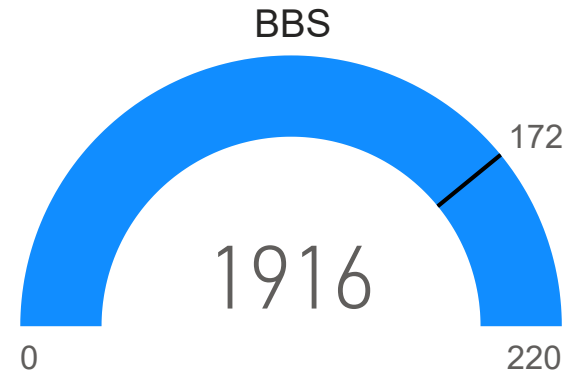


Jän-Dez 2025

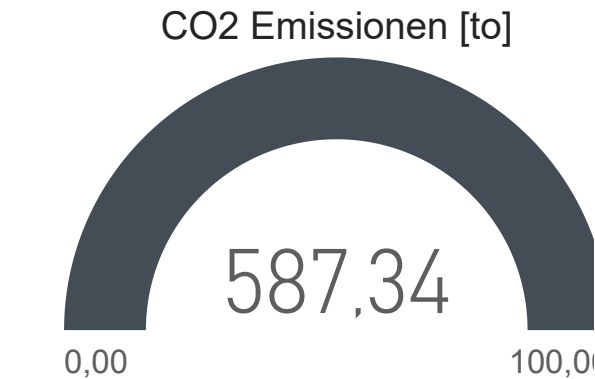
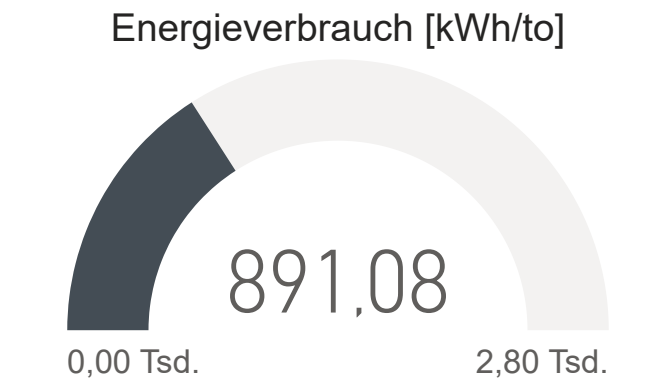
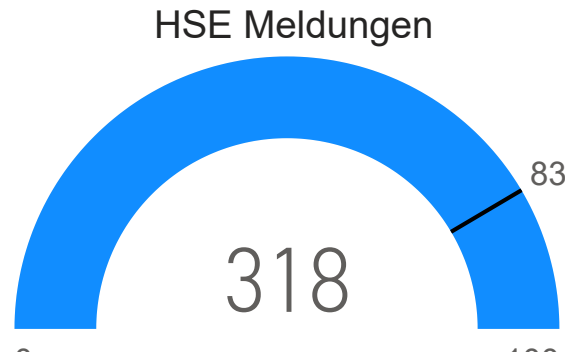
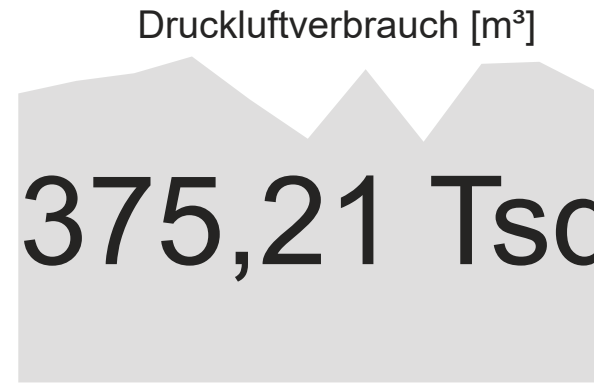
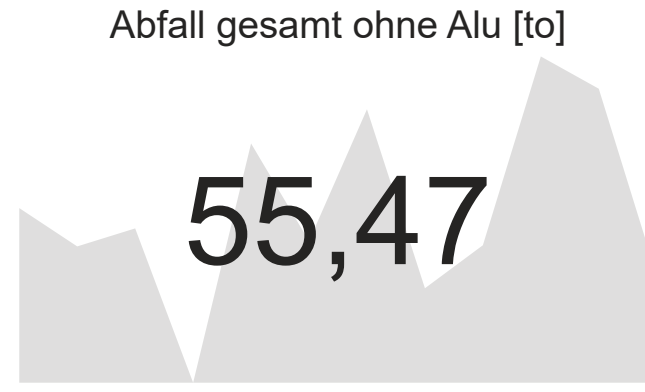
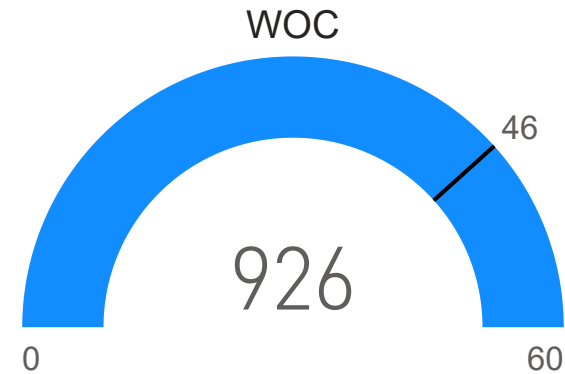
HSE Report



TRR
1,60



SOP WOC
39

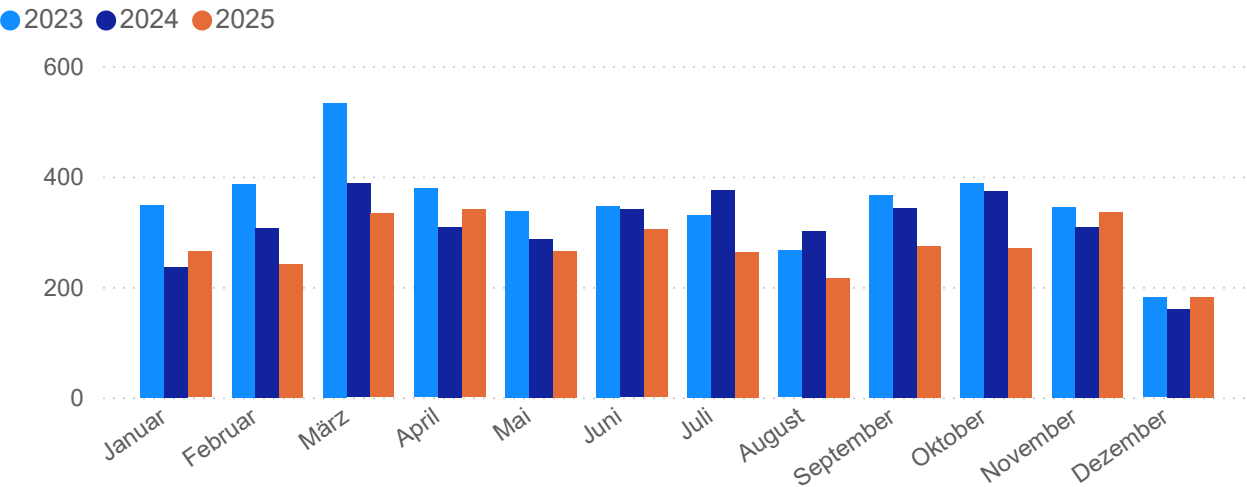


Krankenausfallrate kumuliert YTD

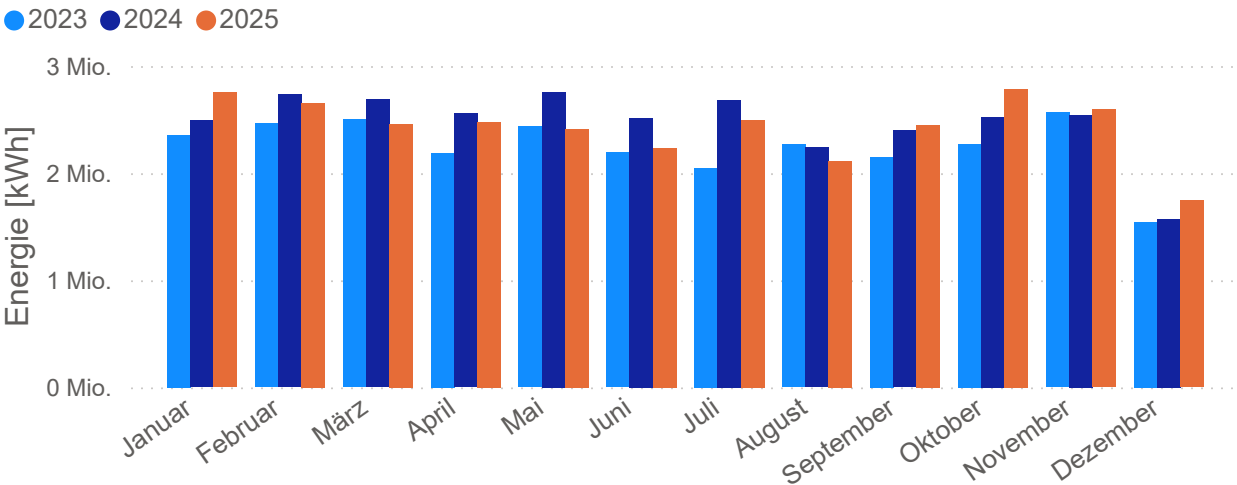
5,27 %

Erste Hilfe
4

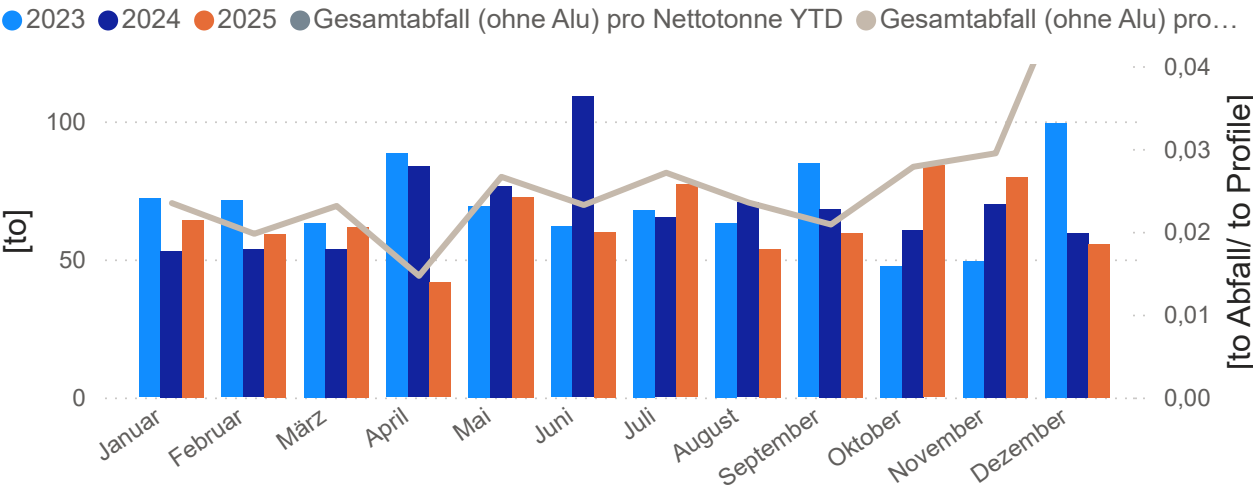
IMS Aktivitäten



Energieverbrauch Gesamt (Strom + Gas)



Abfälle gesamt (ohne Aluminium)



TRR

1,60

Überfällige Maßnahmen

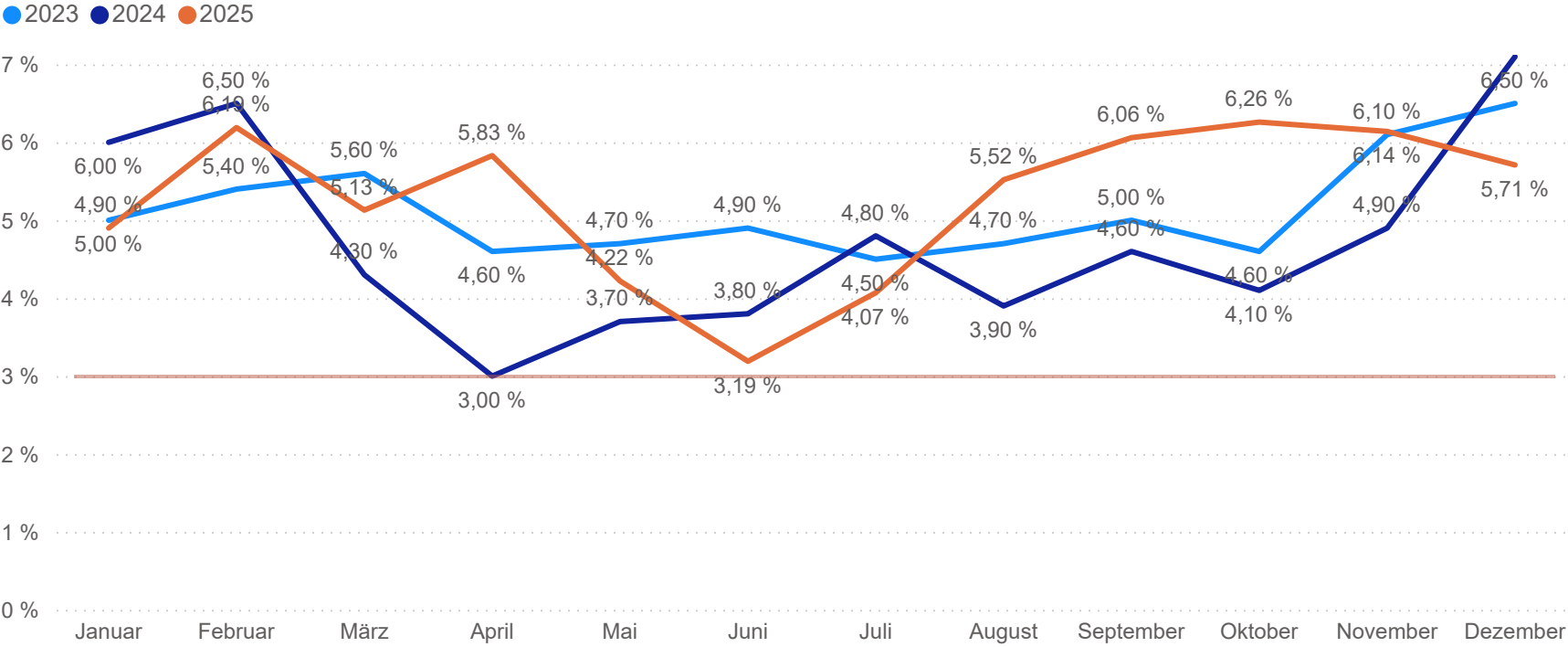
46

13

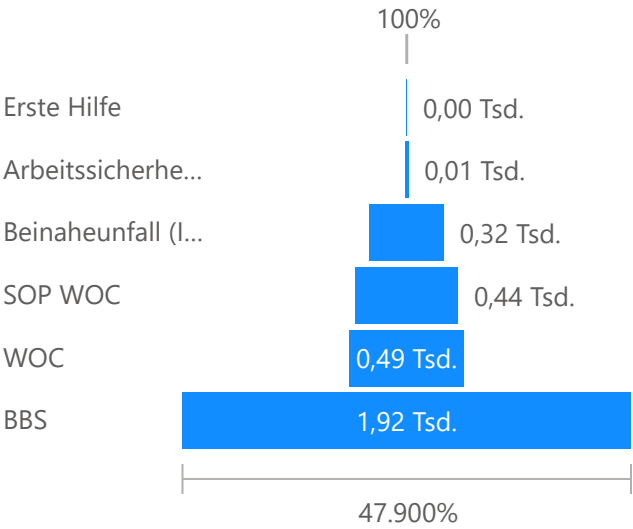
SOP WOC

438

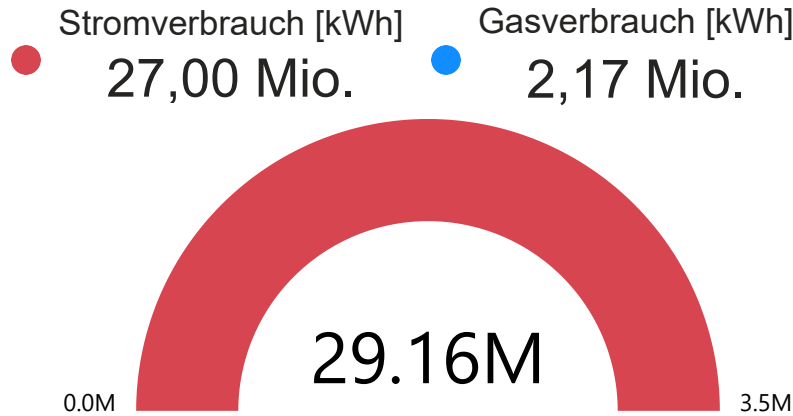
Krankenausfallrate



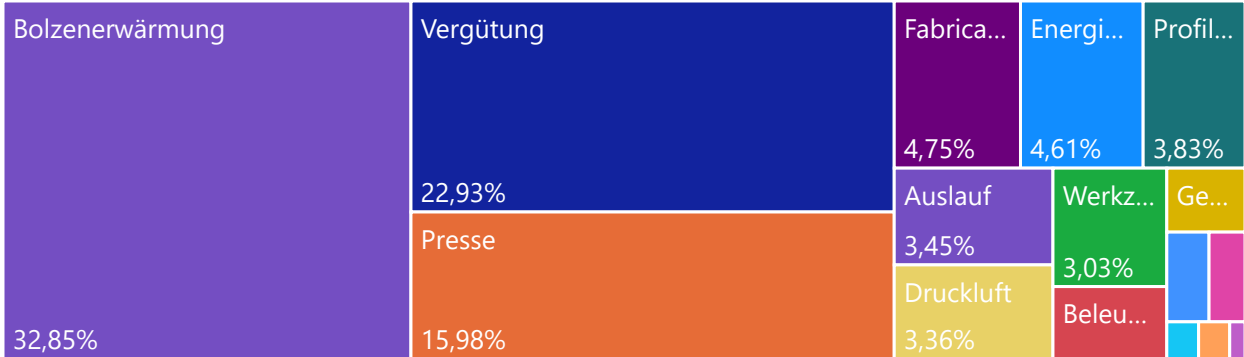
Anzahl von Kategorie nach Kategorie



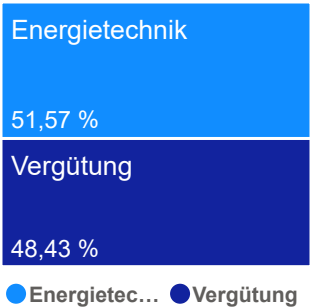
2023	2024	2025
4206	3727	3290



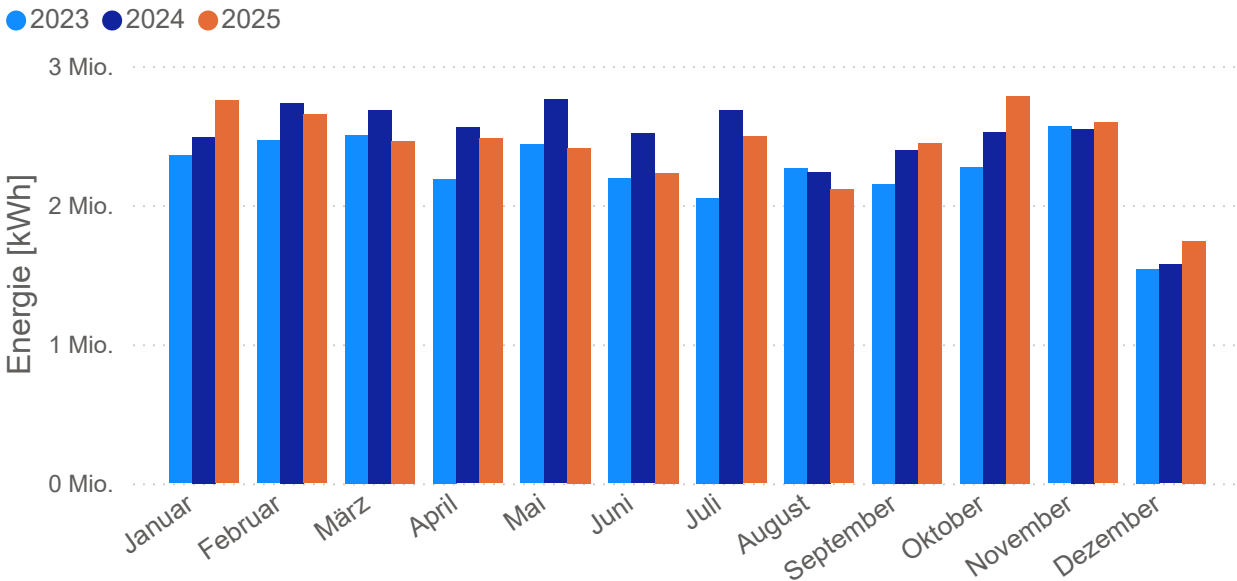
Stromverbrauch nach Anlagenteil



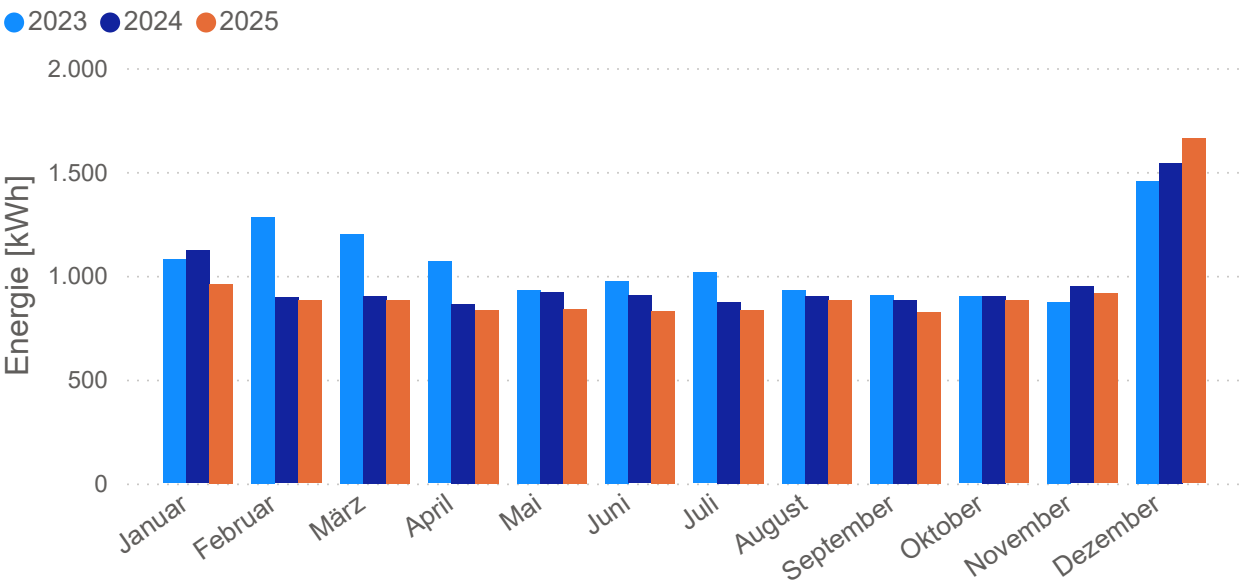
Gasverbrauch



Energieverbrauch Gesamt (Strom + Gas)



Energieverbrauch Gesamt (Strom + Gas)



2025

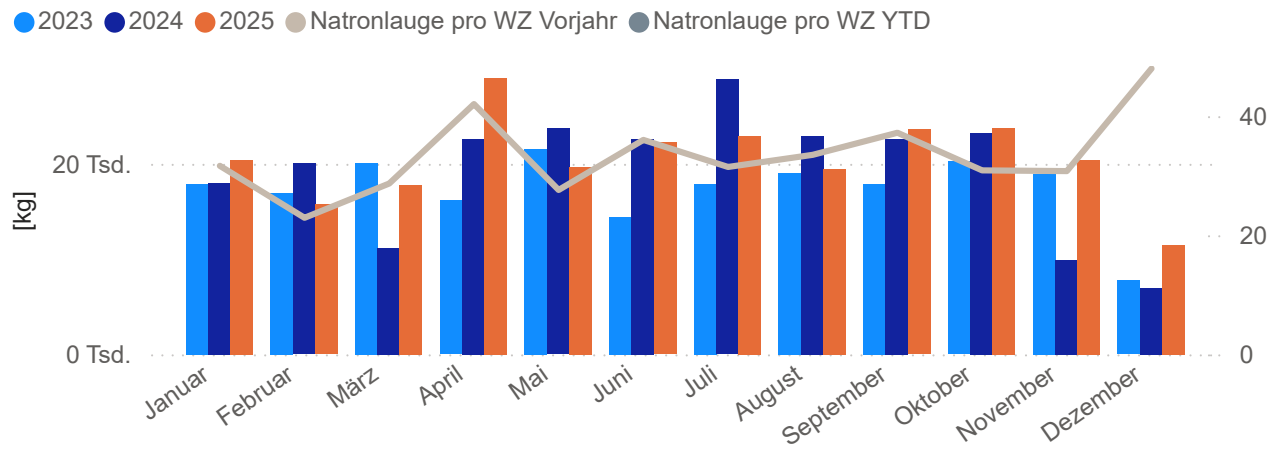
Umwelt - Abfall



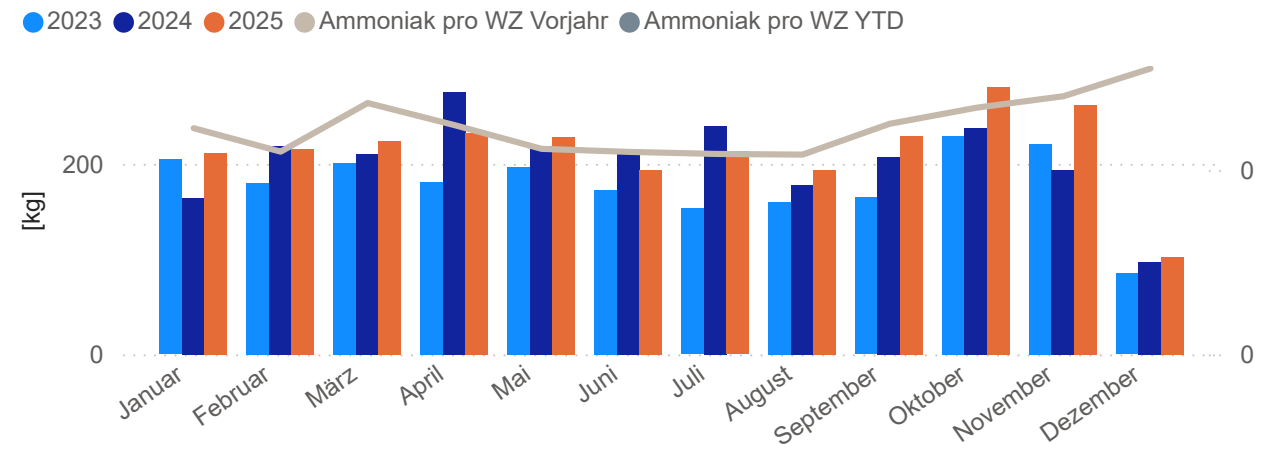
0,034

Abfall to / to

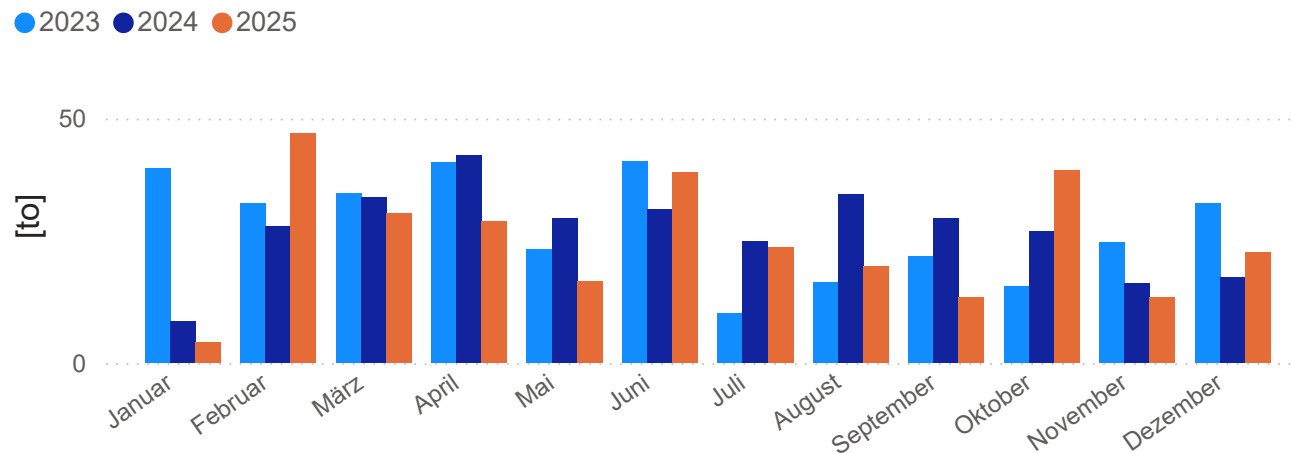
Natronlauge



Ammoniak



Aluminiumschrott (zur Entsorgung)



Gefährliche Abfälle

